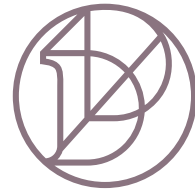




RESIDENCES

MOHAMMED BIN RASHID AL MAKTOUM CITY
DISTRICT ONE



RESIDENCES

MOHAMMED BIN RASHID AL MAKTOUM CITY
DISTRICT ONE

D1RESIDENCES.COM



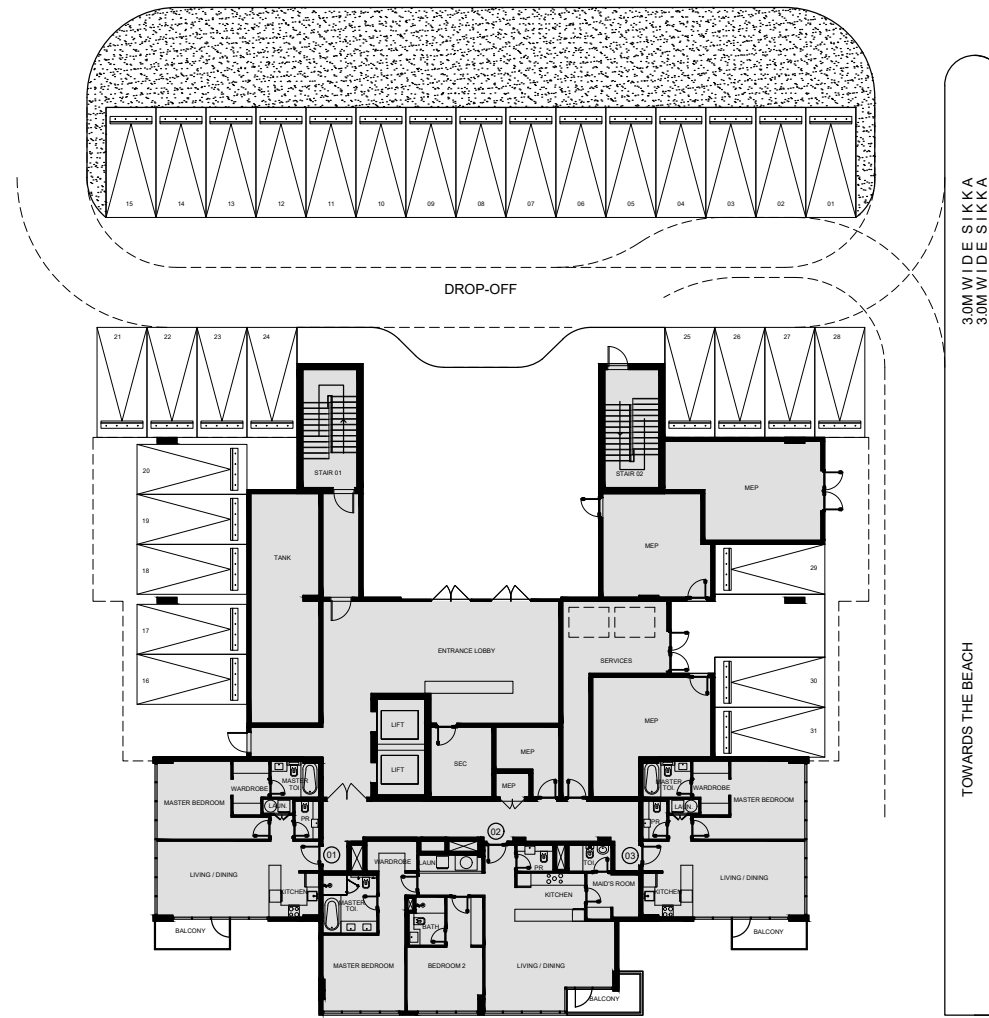
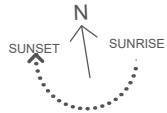
G+4 Apartments

Ground Level

1 and 2 Bedroom Apartments



MOHAMMED BIN RASHID AL MAKTOUM CITY
DISTRICT ONE



Direct beach views



Direct beach views



Direct beach views



Apartment	U1	U2	U3
Level	Ground	Ground	Ground
Living & Dining Room	18.3' x 12.4' / 5.60m x 3.80m	21.3' x 14.7' / 6.50m x 4.50m	18.3' x 12.4' / 5.60m x 3.80m
Kitchen	8.2' x 8.5' / 2.50m x 2.60m	11.4' x 7.8' / 3.50m x 2.40m	8.2' x 8.5' / 2.50m x 2.60m
Master Bedroom	12.1' x 12.8' / 3.70m x 3.90m	13.4' x 13.1' / 4.10m x 4.00m	12.1' x 12.8' / 3.70m x 3.90m
Bedroom 2	—	12.4' x 10.3' / 3.80m x 3.20m	—

DISCLAIMER: All measurements, dimensions, coordinates and drawings given in the Property (Site/Floor) Plans are approximate and provided only for the purpose of illustration, information and general guidance as such drawings are not to scale. All the floor/site plans including concerned plot/room/swimming pool sizes, specifications, locations and orientations shown have been taken from concept designs prior to the actual development/construction and therefore their accuracy in relation to actual construction cannot be confirmed. Hence, we make no guarantee, warranty or representation as to the accuracy and completeness of the Property (Site/Floor) plan information as changes may be made during the development process, without notice. Always refer to latest IFC design available in the sales office for the most accurate representation of all construction details.



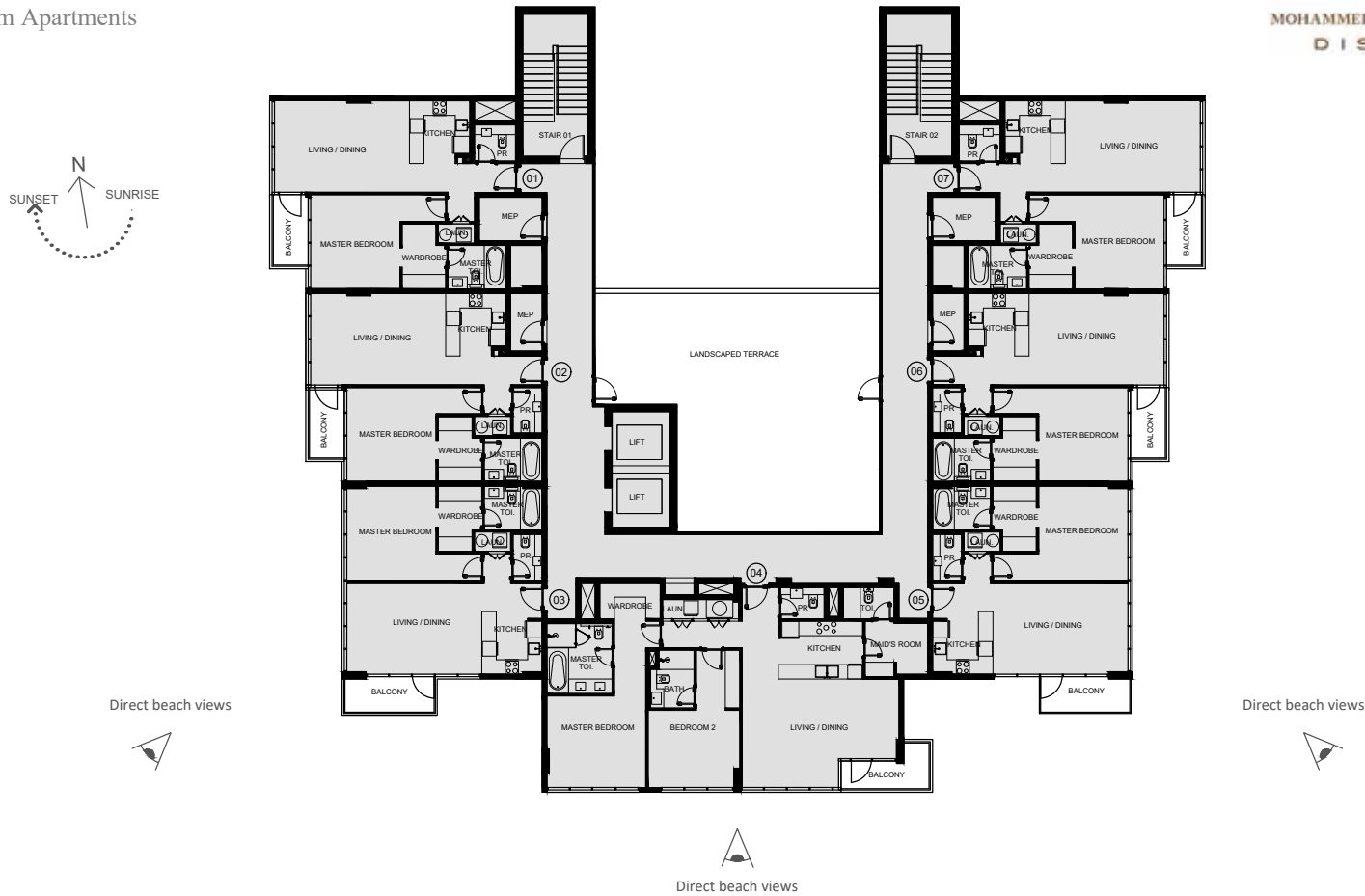
G+4 Apartments

1st to 4th Level

1 and 2 Bedroom Apartments



MOHAMMED BIN RASHID AL MAKTOUM CITY
DISTRICT ONE



Apartments	01	02	03	04	05	06	07
Level	1st to 4th	1st to 4th	1st to 4th	1st to 4th	1st to 4th	1st to 4th	1st to 4th
Living & Dining Area	18.3' x 12.4' / 5.60m x 3.80m	18.3' x 12.4' / 5.60m x 3.80m	18.3' x 12.4' / 5.60m x 3.80m	21.3' x 18.7' / 6.50m x 5.80m	18.3' x 12.4' / 5.60m x 3.80m	18.3' x 12.4' / 5.60m x 3.80m	18.3' x 12.4' / 5.60m x 3.80m
Balcony	8.2' x 8.5' / 2.50m x 2.60m	8.2' x 8.5' / 2.50m x 2.60m	8.2' x 8.1' / 2.50m x 2.40m	11.4' x 7.8' / 3.50m x 2.40m	8.2' x 8.1' / 2.50m x 2.40m	8.2' x 8.1' / 2.50m x 2.40m	8.2' x 8.5' / 2.50m x 2.60m
Master Bedroom	18.3' x 12.4' / 5.60m x 3.80m	12.1' x 12.8' / 3.70m x 3.90m	12.1' x 12.8' / 3.70m x 3.90m	13.4' x 13.3' / 4.10m x 4.00m	17.1' x 17.8' / 5.20m x 5.30m	17.1' x 12.8' / 5.20m x 3.90m	18.3' x 12.4' / 5.60m x 3.80m
Bedroom 2	---	---	---	12.4' x 10.5' / 3.80m x 3.20m	---	---	---

DISCLAIMER: All measurements, dimensions, coordinates and drawings given in the Property (Site/Floor) Plans are approximate and provided only for the purpose of illustration, information and general guidance as such drawings are not to scale. All the floor/site plans including concerned plot/room/swimming pool sizes, specifications, locations and orientations shown have been taken from concept designs prior to the actual development/construction and therefore their accuracy in relation to actual construction cannot be confirmed. Hence, we make no guarantee, warranty or representation as to the accuracy and completeness of the Property (Site/Floor) plan information as changes may be made during the development process, without notice. Always refer to latest IFC design available in the sales office for the most accurate representation of all construction details.



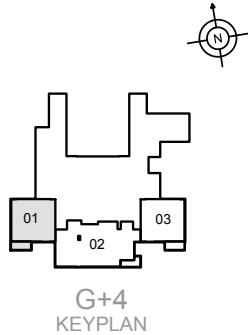
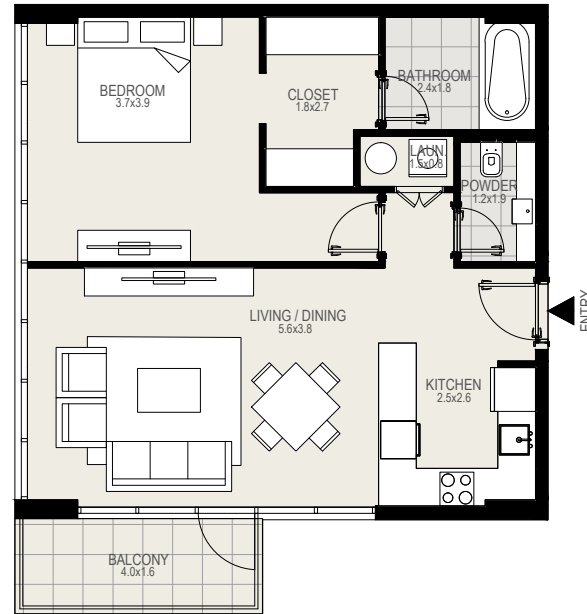
1 BEDROOM TYPE C



MOHAMMED BIN RASHID AL MAKTOUM CITY
DISTRICT ONE

UNIT 01 | GROUND LEVEL

Suite Area	706 sq. ft
Balcony Area	63 sq. ft
Total Area	769 sq. ft



DISCLAIMER: All measurements, dimensions, coordinates and drawings given in the Property (Site/Floor) Plans are approximate and provided only for the purpose of illustration, information and general guidance as such drawings are not to scale. All the floor/site plans including concerned plot/room/swimming pool sizes, specifications, locations and orientations shown have been taken from concept designs prior to the actual development/construction and therefore their accuracy in relation to actual construction cannot be confirmed. Hence, we make no guarantee, warranty or representation as to the accuracy and completeness of the Property (Site/Floor) plan information as changes may be made during the development process, without notice. Always refer to latest IFC design available in the sales office for the most accurate representation of all construction details.



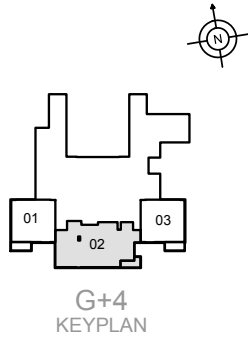
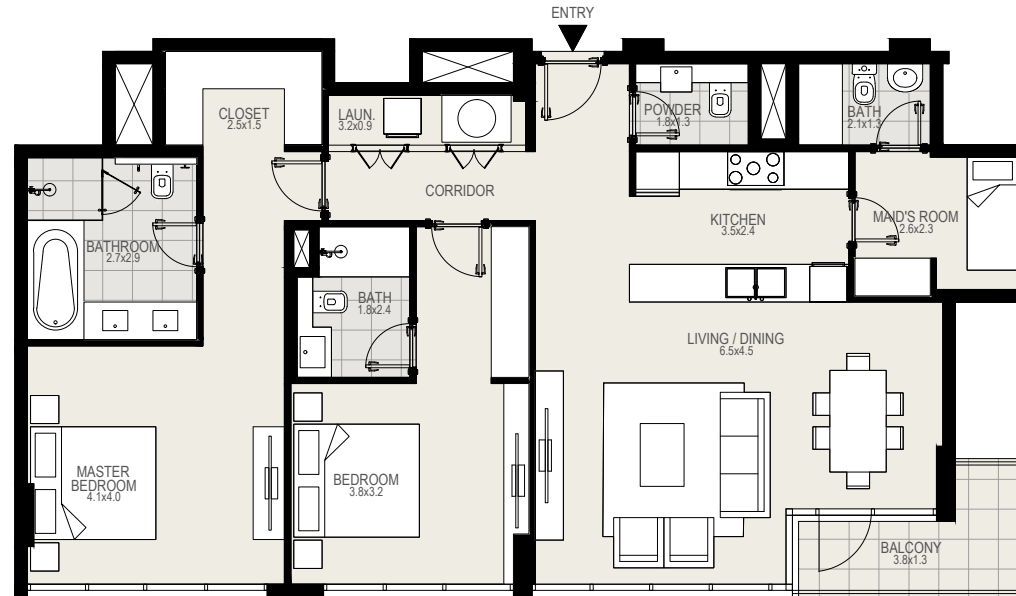
2 BEDROOM TYPE D



MOHAMMED BIN RASHID AL MAKTOUM CITY
DISTRICT ONE

UNIT 02 | GROUND LEVEL

Suite Area	1282 sq. ft
Balcony Area	58 sq. ft
Total Area	1340 sq. ft



DISCLAIMER: All measurements, dimensions, coordinates and drawings given in the Property (Site/Floor) Plans are approximate and provided only for the purpose of illustration, information and general guidance as such drawings are not to scale. All the floor/site plans including concerned plot/room/swimming pool sizes, specifications, locations and orientations shown have been taken from concept designs prior to the actual development/construction and therefore their accuracy in relation to actual construction cannot be confirmed. Hence, we make no guarantee, warranty or representation as to the accuracy and completeness of the Property (Site/Floor) plan information as changes may be made during the development process, without notice. Always refer to latest IFC design available in the sales office for the most accurate representation of all construction details.

meydan
SOBHA

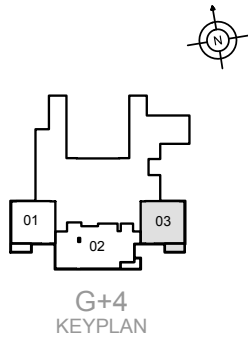
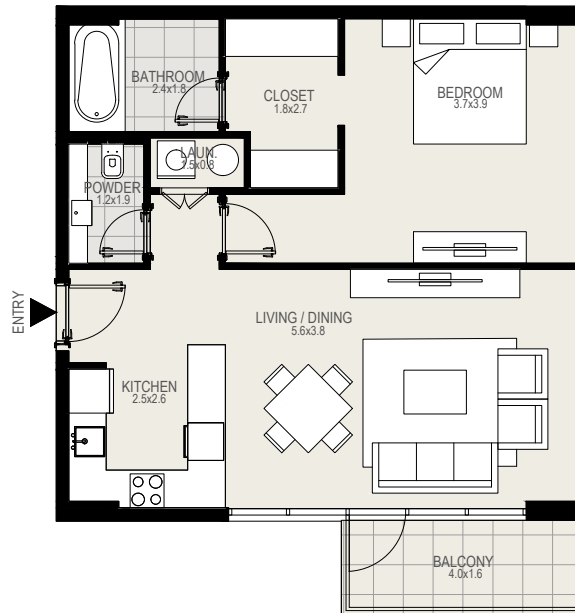
1 BEDROOM TYPE C



MOHAMMED BIN RASHID AL MAKTOUM CITY
DISTRICT ONE

UNIT 03 | GROUND LEVEL

Suite Area	706 sq. ft
Balcony Area	63 sq. ft
Total Area	769 sq. ft



DISCLAIMER: All measurements, dimensions, coordinates and drawings given in the Property (Site/Floor) Plans are approximate and provided only for the purpose of illustration, information and general guidance as such drawings are not to scale. All the floor/site plans including concerned plot/room/swimming pool sizes, specifications, locations and orientations shown have been taken from concept designs prior to the actual development/construction and therefore their accuracy in relation to actual construction cannot be confirmed. Hence, we make no guarantee, warranty or representation as to the accuracy and completeness of the Property (Site/Floor) plan information as changes may be made during the development process, without notice. Always refer to latest IFC design available in the sales office for the most accurate representation of all construction details.



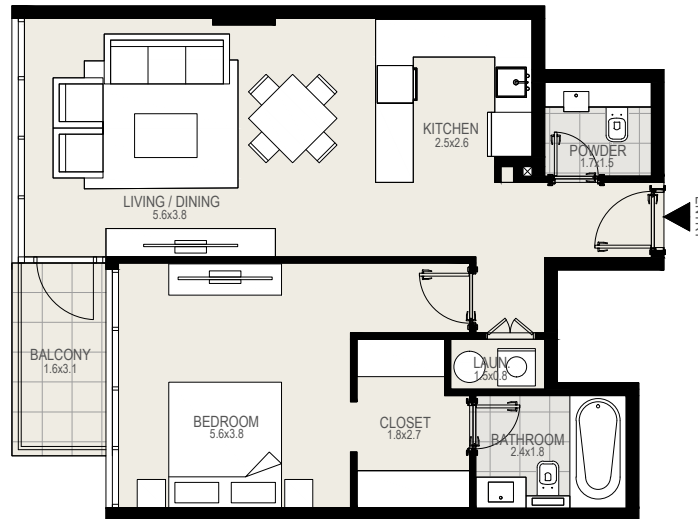
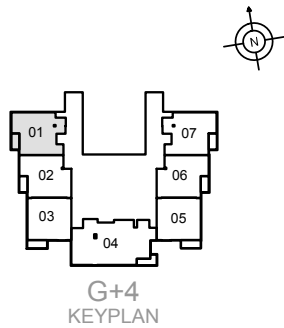
1 BEDROOM TYPE E



MOHAMMED BIN RASHID AL MAKTOUM CITY
DISTRICT ONE

UNIT 01 | LEVELS 1 TO 4

Suite Area	743 sq. ft
Balcony Area	49 sq. ft
Total Area	792 sq. ft



DISCLAIMER: All measurements, dimensions, coordinates and drawings given in the Property (Site/Floor) Plans are approximate and provided only for the purpose of illustration, information and general guidance as such drawings are not to scale. All the floor/site plans including concerned plot/room/swimming pool sizes, specifications, locations and orientations shown have been taken from concept designs prior to the actual development/construction and therefore their accuracy in relation to actual construction cannot be confirmed. Hence, we make no guarantee, warranty or representation as to the accuracy and completeness of the Property (Site/Floor) plan information as changes may be made during the development process, without notice. Always refer to latest IFC design available in the sales office for the most accurate representation of all construction details.



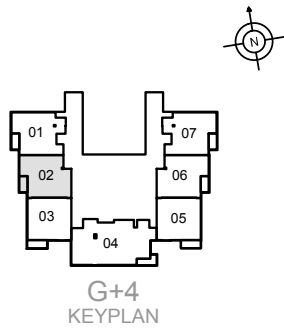
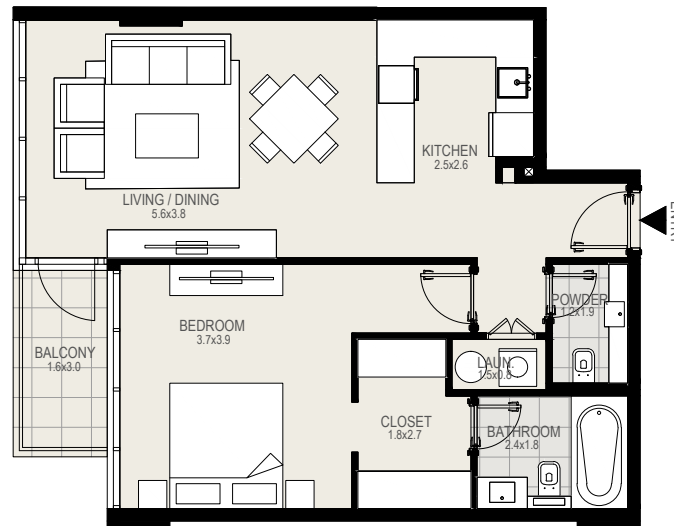
1 BEDROOM TYPE D



MOHAMMED BIN RASHID AL MAKTOUM CITY
DISTRICT ONE

UNIT 02 | LEVELS 1 TO 4

Suite Area	732 sq. ft
Balcony Area	49 sq. ft
Total Area	781 sq. ft



DISCLAIMER: All measurements, dimensions, coordinates and drawings given in the Property (Site/Floor) Plans are approximate and provided only for the purpose of illustration, information and general guidance as such drawings are not to scale. All the floor/site plans including concerned plot/room/swimming pool sizes, specifications, locations and orientations shown have been taken from concept designs prior to the actual development/construction and therefore their accuracy in relation to actual construction cannot be confirmed. Hence, we make no guarantee, warranty or representation as to the accuracy and completeness of the Property (Site/Floor) plan information as changes may be made during the development process, without notice. Always refer to latest IFC design available in the sales office for the most accurate representation of all construction details.



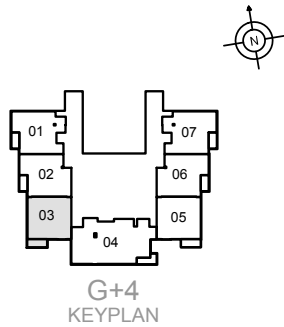
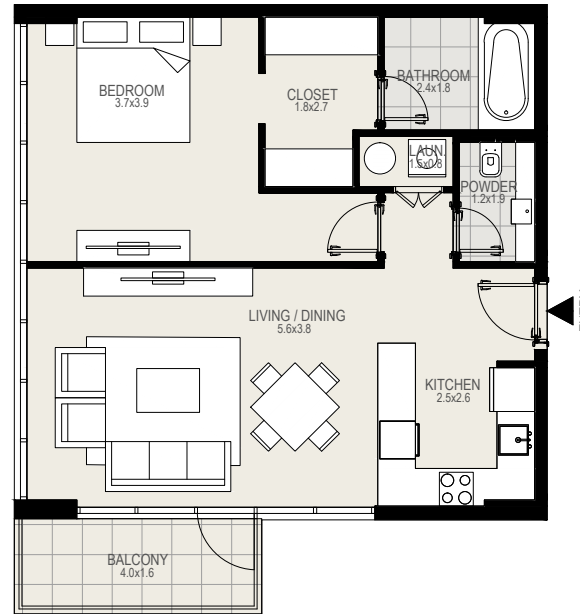
1 BEDROOM TYPE C



MOHAMMED BIN RASHID AL MAKTOUM CITY
DISTRICT ONE

UNIT 03 | LEVELS 1 TO 4

Suite Area	706 sq. ft
Balcony Area	63 sq. ft
Total Area	769 sq. ft



DISCLAIMER: All measurements, dimensions, coordinates and drawings given in the Property (Site/Floor) Plans are approximate and provided only for the purpose of illustration, information and general guidance as such drawings are not to scale. All the floor/site plans including concerned plot/room/swimming pool sizes, specifications, locations and orientations shown have been taken from concept designs prior to the actual development/construction and therefore their accuracy in relation to actual construction cannot be confirmed. Hence, we make no guarantee, warranty or representation as to the accuracy and completeness of the Property (Site/Floor) plan information as changes may be made during the development process, without notice. Always refer to latest IFC design available in the sales office for the most accurate representation of all construction details.



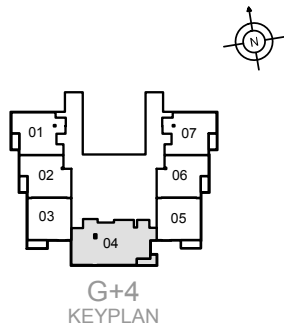
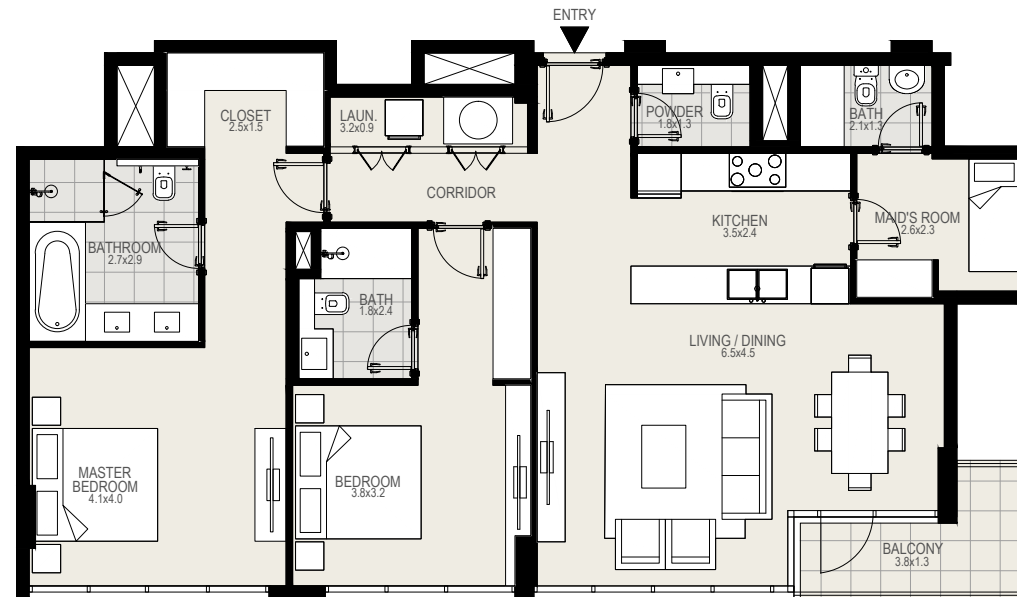
2 BEDROOM TYPE D



MOHAMMED BIN RASHID AL MAKTOUM CITY
DISTRICT ONE

UNIT 04 | LEVELS 1 TO 4

Suite Area	1282 sq. ft
Balcony Area	58 sq. ft
Total Area	1340 sq. ft



DISCLAIMER: All measurements, dimensions, coordinates and drawings given in the Property (Site/Floor) Plans are approximate and provided only for the purpose of illustration, information and general guidance as such drawings are not to scale. All the floor/site plans including concerned plot/room/swimming pool sizes, specifications, locations and orientations shown have been taken from concept designs prior to the actual development/construction and therefore their accuracy in relation to actual construction cannot be confirmed. Hence, we make no guarantee, warranty or representation as to the accuracy and completeness of the Property (Site/Floor) plan information as changes may be made during the development process, without notice. Always refer to latest IFC design available in the sales office for the most accurate representation of all construction details.



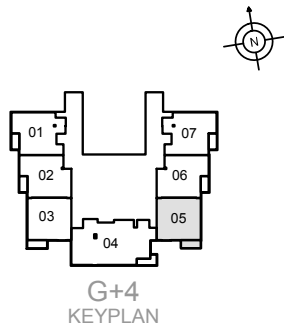
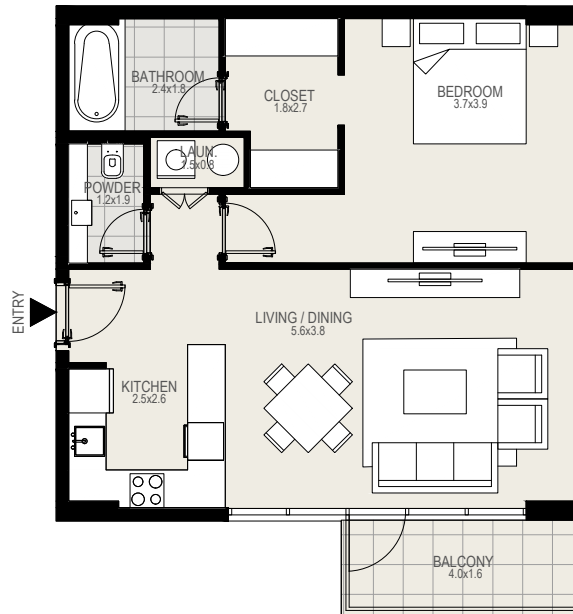
1 BEDROOM TYPE C



MOHAMMED BIN RASHID AL MAKTOUM CITY
DISTRICT ONE

UNIT 05 | LEVELS 1 TO 4

Suite Area	706 sq. ft
Balcony Area	63 sq. ft
Total Area	769 sq. ft



DISCLAIMER: All measurements, dimensions, coordinates and drawings given in the Property (Site/Floor) Plans are approximate and provided only for the purpose of illustration, information and general guidance as such drawings are not to scale. All the floor/site plans including concerned plot/room/swimming pool sizes, specifications, locations and orientations shown have been taken from concept designs prior to the actual development/construction and therefore their accuracy in relation to actual construction cannot be confirmed. Hence, we make no guarantee, warranty or representation as to the accuracy and completeness of the Property (Site/Floor) plan information as changes may be made during the development process, without notice. Always refer to latest IFC design available in the sales office for the most accurate representation of all construction details.



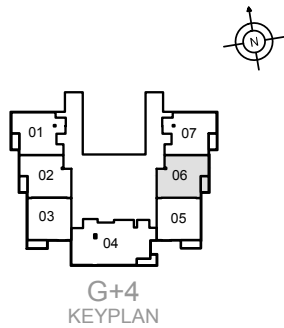
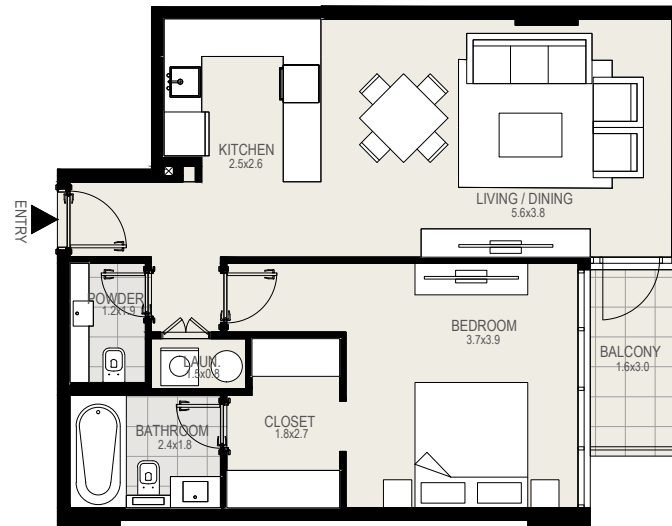
1 BEDROOM TYPE D



MOHAMMED BIN RASHID AL MAKTOUM CITY
DISTRICT ONE

UNIT 06 | LEVELS 1 TO 4

Suite Area	732 sq. ft
Balcony Area	49 sq. ft
Total Area	781 sq. ft



DISCLAIMER: All measurements, dimensions, coordinates and drawings given in the Property (Site/Floor) Plans are approximate and provided only for the purpose of illustration, information and general guidance as such drawings are not to scale. All the floor/site plans including concerned plot/room/swimming pool sizes, specifications, locations and orientations shown have been taken from concept designs prior to the actual development/construction and therefore their accuracy in relation to actual construction cannot be confirmed. Hence, we make no guarantee, warranty or representation as to the accuracy and completeness of the Property (Site/Floor) plan information as changes may be made during the development process, without notice. Always refer to latest IFC design available in the sales office for the most accurate representation of all construction details.



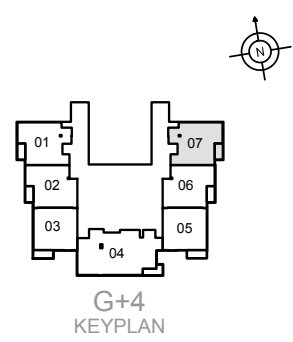
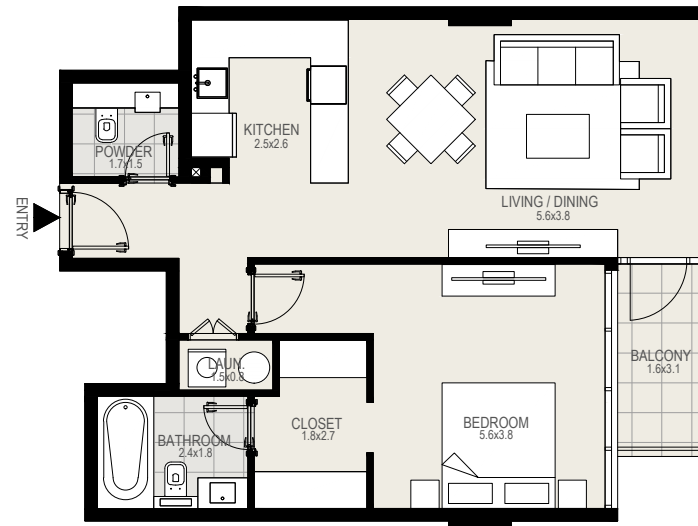
1 BEDROOM TYPE E



MOHAMMED BIN RASHID AL MAKTOUM CITY
DISTRICT ONE

UNIT 07 | LEVELS 1 TO 4

Suite Area	743 sq. ft
Balcony Area	49 sq. ft
Total Area	792 sq. ft



DISCLAIMER: All measurements, dimensions, coordinates and drawings given in the Property (Site/Floor) Plans are approximate and provided only for the purpose of illustration, information and general guidance as such drawings are not to scale. All the floor/site plans including concerned plot/room/swimming pool sizes, specifications, locations and orientations shown have been taken from concept designs prior to the actual development/construction and therefore their accuracy in relation to actual construction cannot be confirmed. Hence, we make no guarantee, warranty or representation as to the accuracy and completeness of the Property (Site/Floor) plan information as changes may be made during the development process, without notice. Always refer to latest IFC design available in the sales office for the most accurate representation of all construction details.



Disclaimer: The trademarks, images and copyright included in this literature may not be used without the express prior written consent of Meydan Sobha LLC FZ. All rights reserved. All reasonable care has been taken in the preparation of this literature and to the best of our knowledge, no relevant information has been omitted on purpose. However, Meydan Sobha LLC FZ and its management, employees, appointment sales and marketing agents disclaim all liability in the event that any information, design, area or matter in this literature differs from the sale and purchase agreement or the actual constructed development or part of the development. None of the information contained in this literature should be reviewed as an offer to sell or as a solicitation to purchaser any part of the development. Rather the information contained herein is provided to you as that you can learn and generally familiarise yourself with the development. We reserve our right to make improvements and/or changes to this literature and the information, design or areas contained at any time without notice or obligation.

All measurements, dimensions, coordinates and drawings given in the floor plan brochures are approximate and provided only for the purpose of marketing, illustration, information and general guidance as such drawings are not to scale. All the rooms, swimming pool, sizes, locations, orientations, dimensions, fixtures, fittings, finishes and specifications (including materials, placement, size of rooms, windows, doors, balcony, furniture, inbuilt wardrobe etc.) provided in the floor plans may vary as the same have been taken from concept designs prior to the actual development/construction and therefore their accuracy in relation to actual construction cannot be confirmed. Hence, we make no guarantee, warranty or representation as to the accuracy and completeness of the floor plan information as changes may be made during the development process, without notice. Always refer to the latest IFC design available in the sales office for the most accurate representation of all construction details.

Developer no- 956 | Project no- 1703 | Trakheesi no- 17110

مدينة محمد بن راشد آل مكتوم - دسترکت ون
صندوق بريد 128600، دبي، الإمارات العربية المتحدة
هـ: +971 4 403 0000

Mohammed Bin Rashid Al Maktoum City – District One
P.O. Box 128600, Dubai, United Arab Emirates
T: +971 4 403 0000

www.meydansobha.com

